

## Two-Factor Authentication

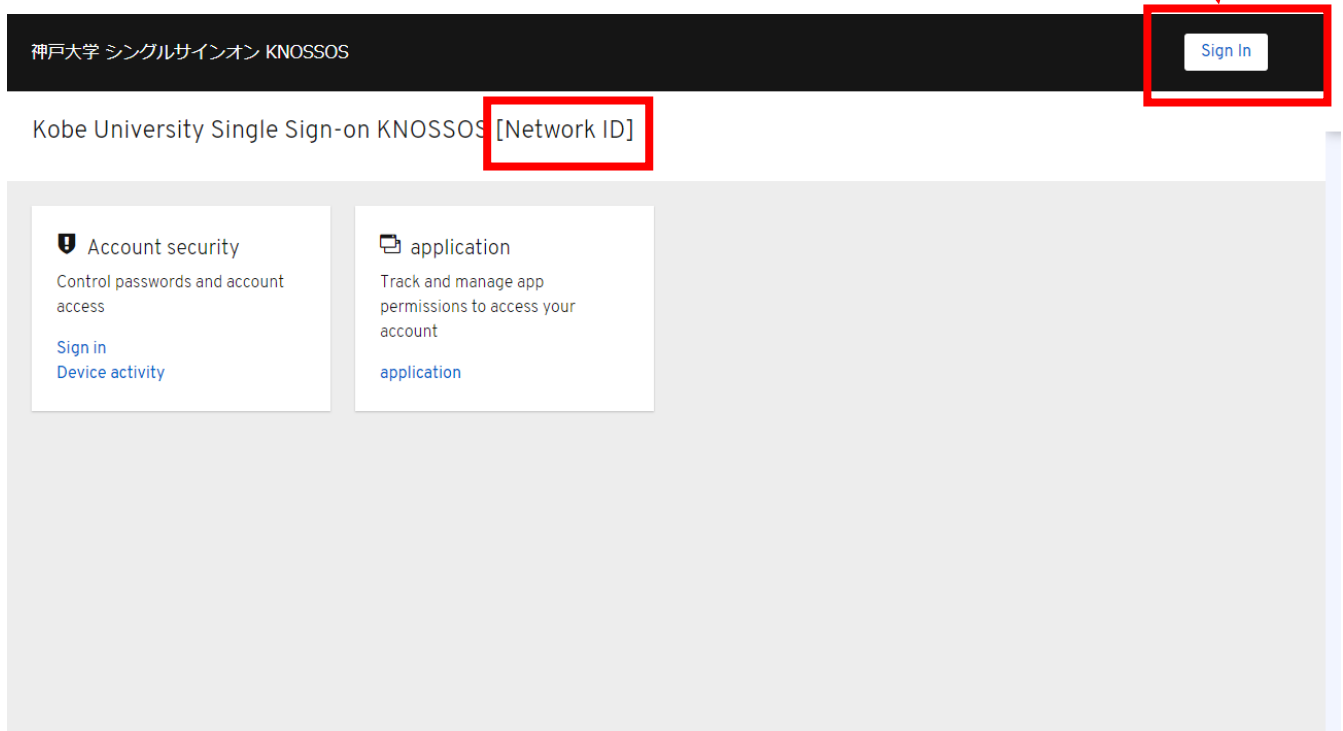
<For iPhone users>

### 1. (iPhone) Download FreeOTP

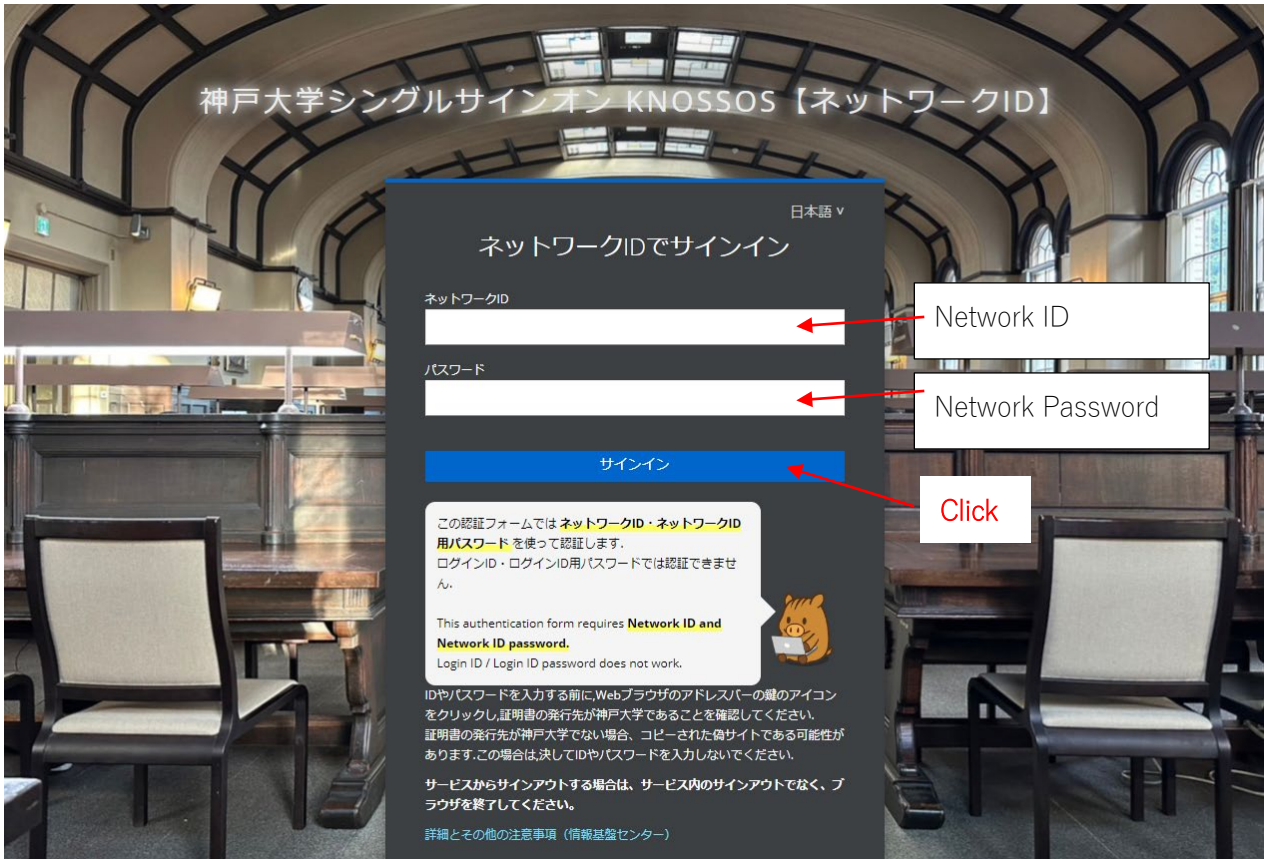


### 2. (PC) Sign-in to [Knossos network](https://knossos.center.kobe-u.ac.jp/auth/realms/networkid/account/#/) with your PC browser

<https://knossos.center.kobe-u.ac.jp/auth/realms/networkid/account/#/>



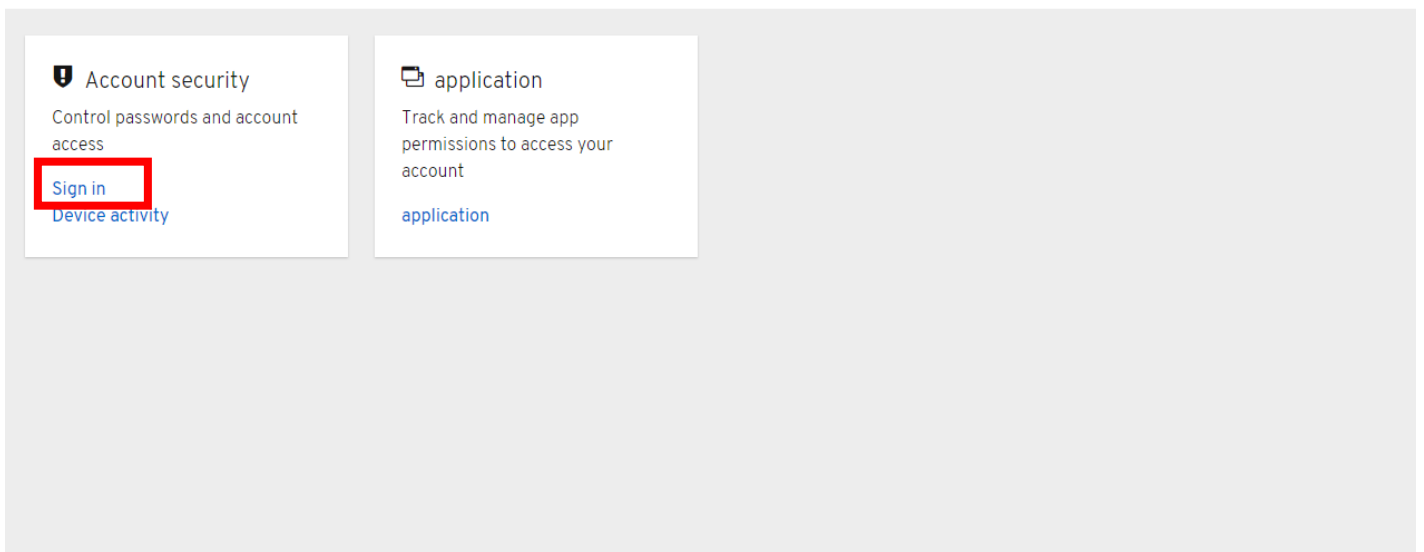
### 3. (PC) Input Network ID and Network Password



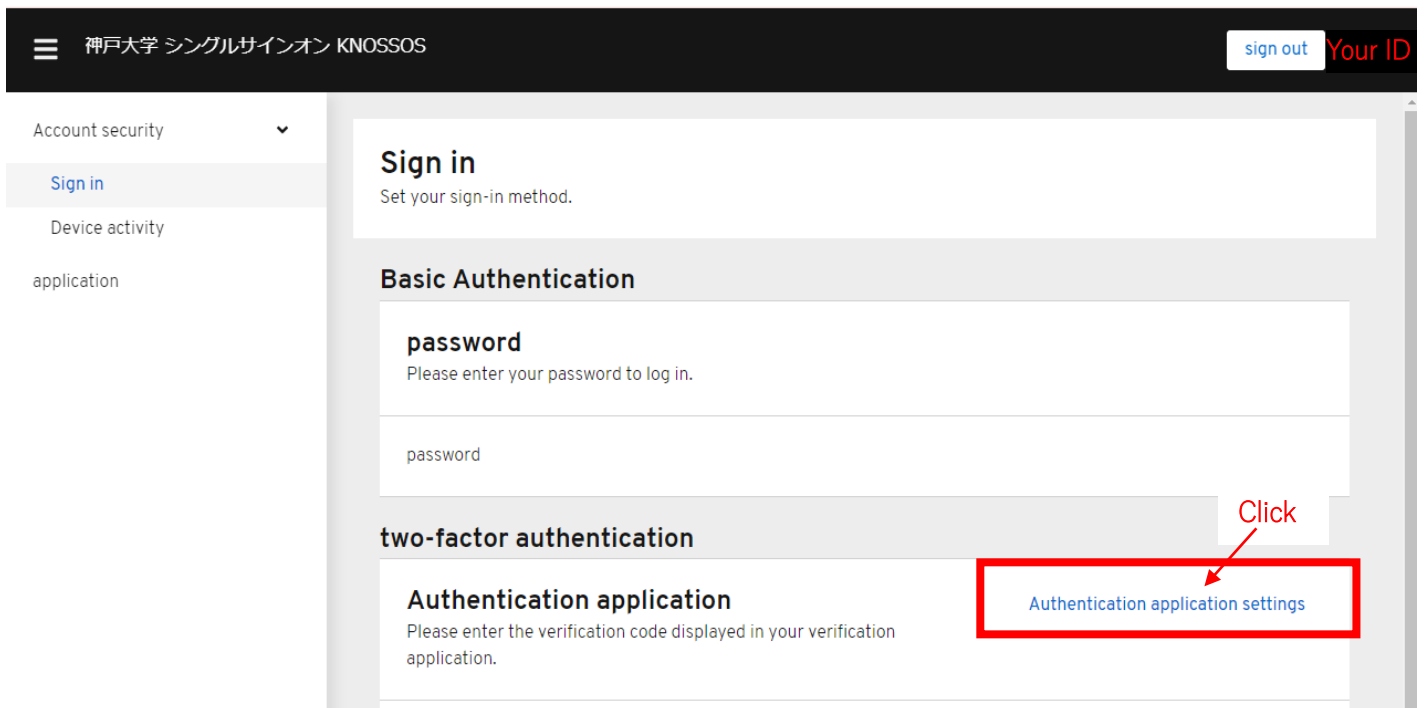
### 4. (PC) Click Sign-in



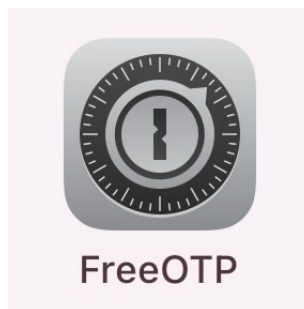
#### Kobe University Single Sign-on KNOSSOS [Network ID]



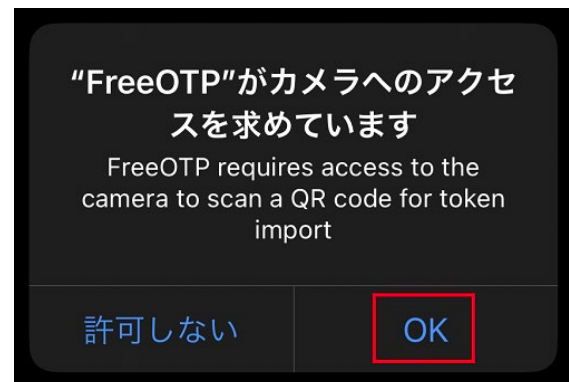
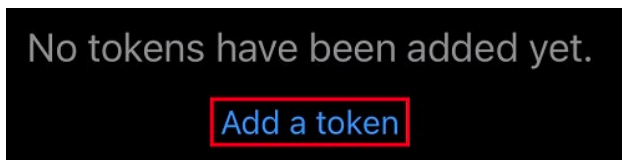
5. (PC) Click “Authentication application settings (認証アプリケーション設定)”



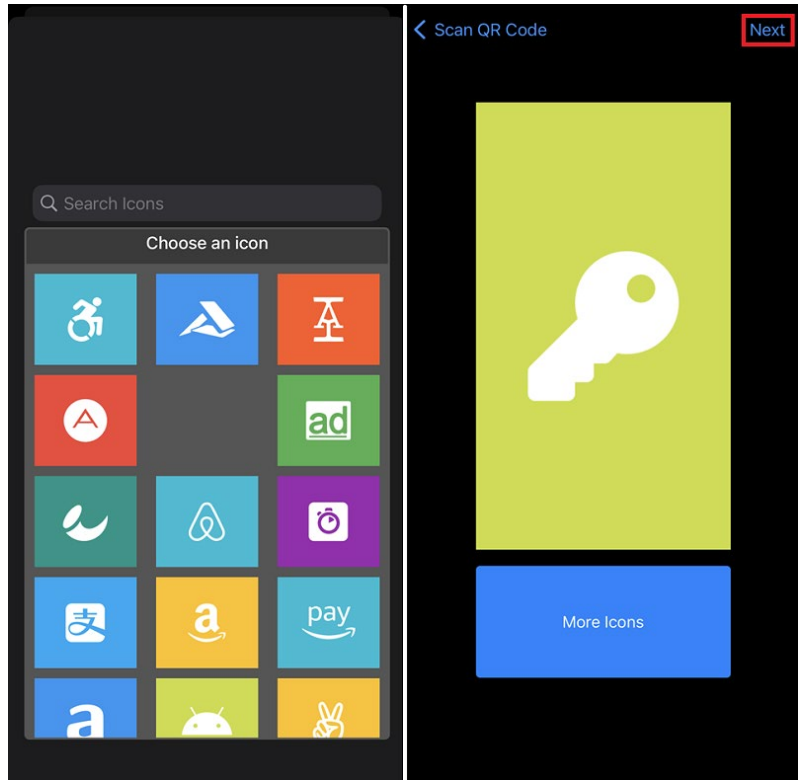
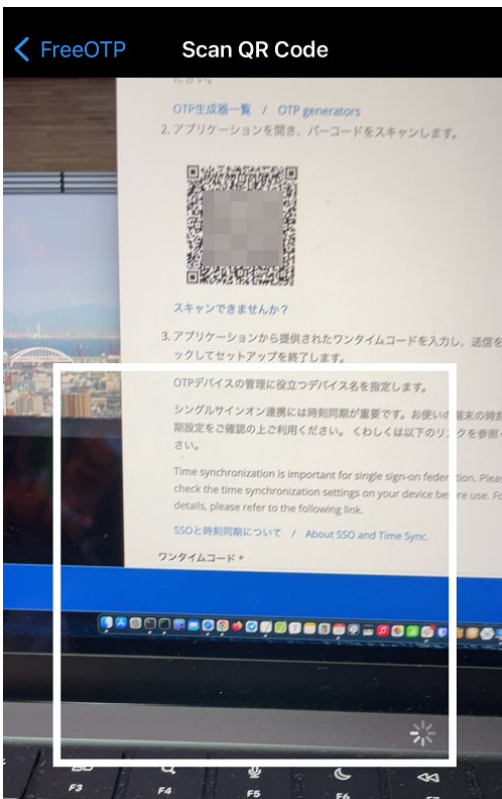
6. (iPhone) Open FreeOTP



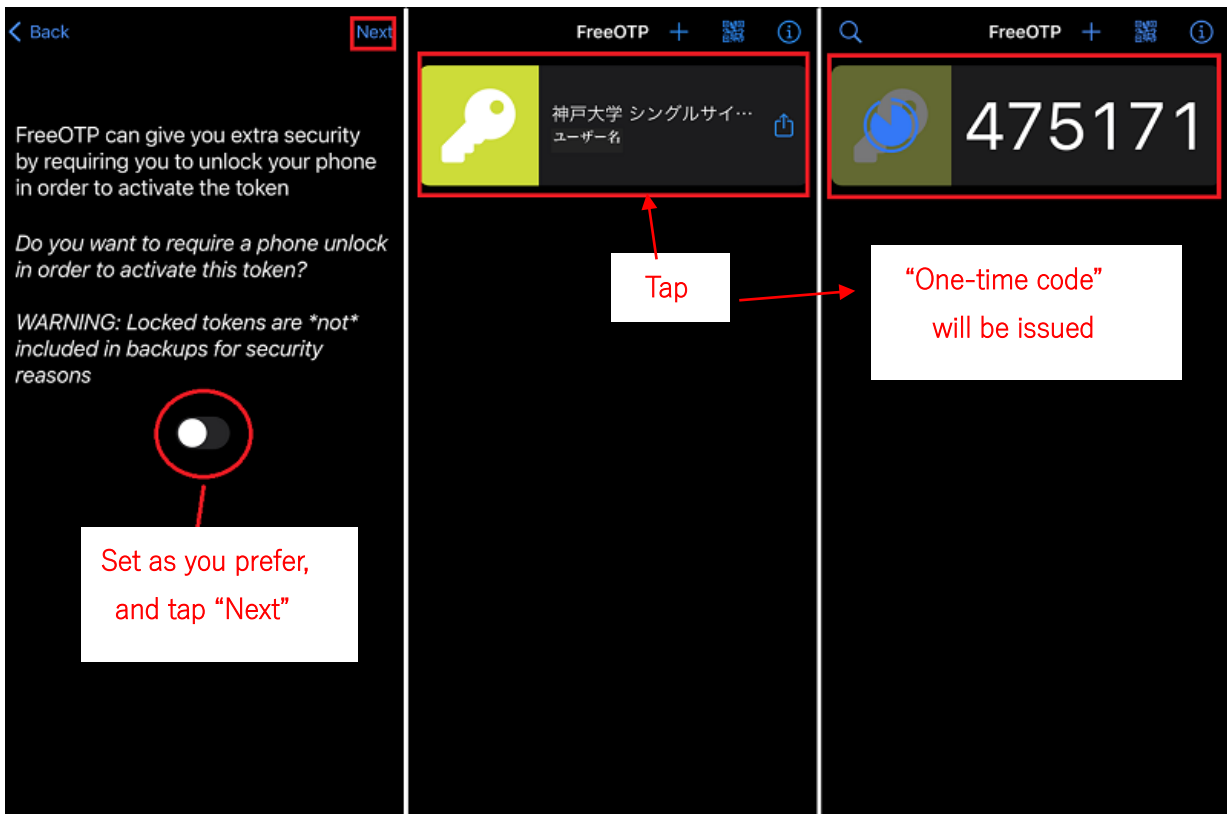
7. (iPhone) Tap “Add a token,” then tap “OK”



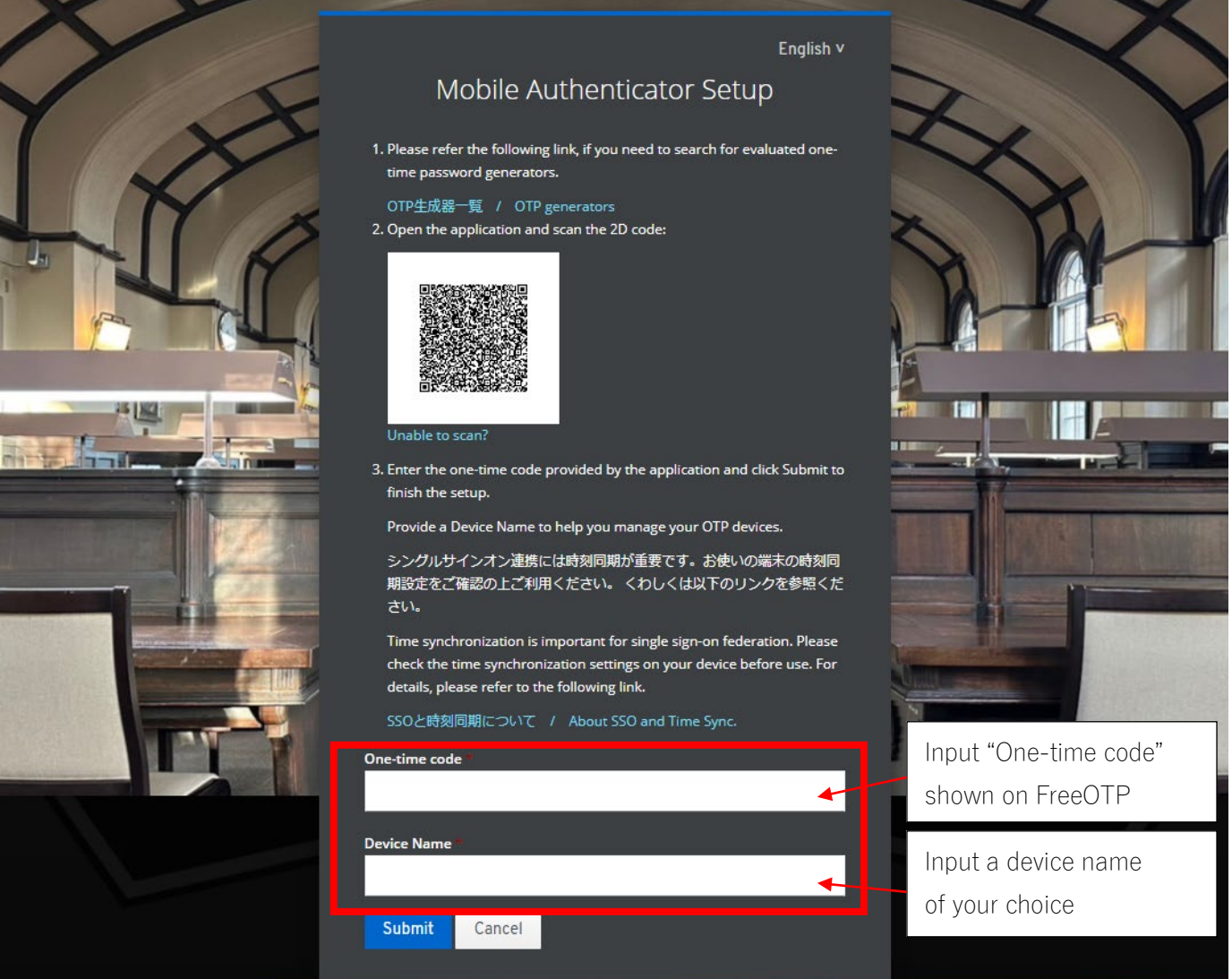
8. (PC/iPhone) Scan QR code from PC      9. (iPhone) Choose an icon you like, and tap “Next”



10. (iPhone) Tap “Next” ⇒ Tap icon to have a “One-time code” issued




### 11. (PC) Input “One-time code” and “Device Name”



English ▾

## Mobile Authenticator Setup

- Please refer the following link, if you need to search for evaluated one-time password generators.  
[OTP生成器一覧 / OTP generators](#)
- Open the application and scan the 2D code:
 



[Unable to scan?](#)
- Enter the one-time code provided by the application and click Submit to finish the setup.  
 Provide a Device Name to help you manage your OTP devices.  
 シングルサインオン連携には時刻同期が重要です。お使いの端末の時刻同期設定をご確認の上ご利用ください。くわしくは以下のリンクを参照ください。  
 Time synchronization is important for single sign-on federation. Please check the time synchronization settings on your device before use. For details, please refer to the following link.  
[SSOと時刻同期について / About SSO and Time Sync.](#)

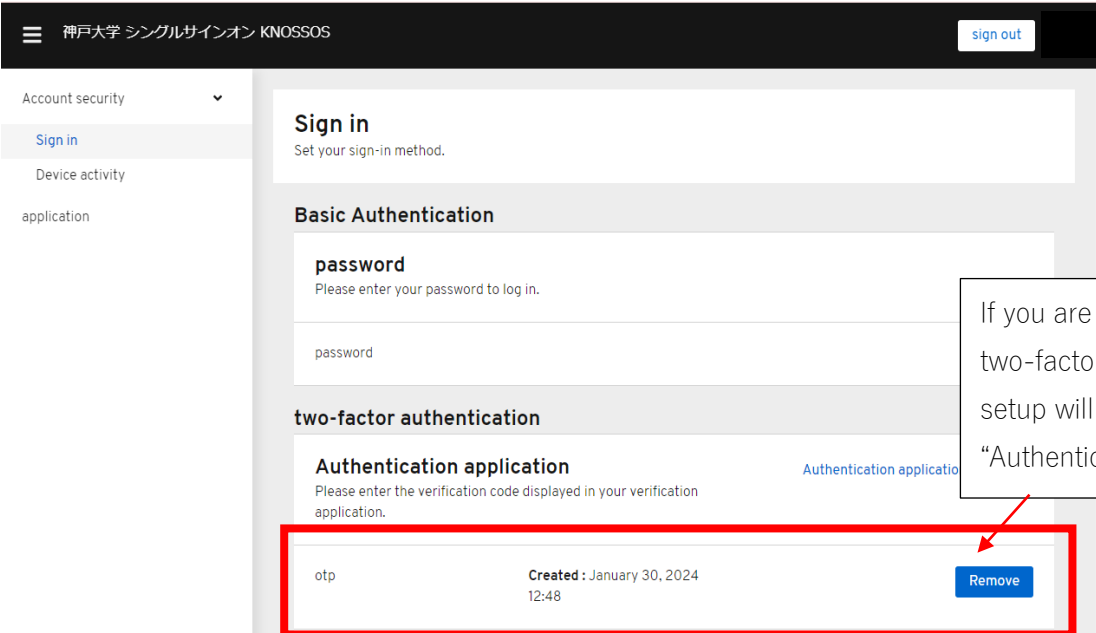
**One-time code**

**Device Name**

[Submit](#) [Cancel](#)

Input “One-time code” shown on FreeOTP

Input a device name of your choice



神戸大学 シングルサインオン KNOSSOS [sign out](#)

Account security ▾

- Sign in**
- Device activity
- application

### Sign in

Set your sign-in method.

#### Basic Authentication

**password**  
Please enter your password to log in.

#### two-factor authentication

**Authentication application** [Authentication application](#)  
Please enter the verification code displayed in your verification application.

otp	Created : January 30, 2024 12:48	<a href="#">Remove</a>
-----	-------------------------------------	------------------------

If you are successful, two-factor authentication setup will be listed under “Authentication application”